

EDITION
33


NSB Business School
ACADEMY

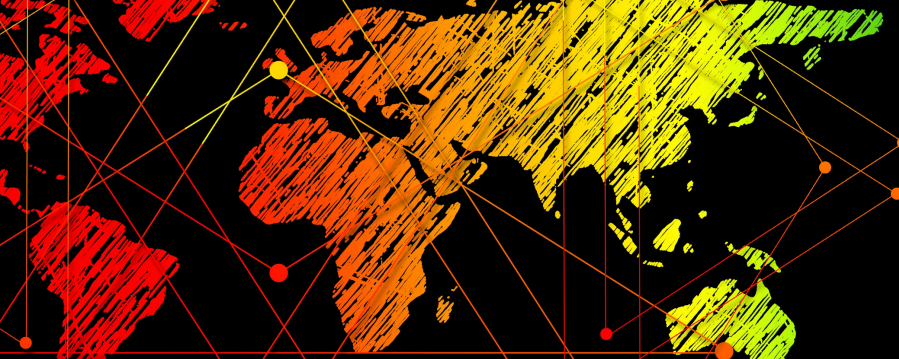


GOLDEN HELLO



A | ABSOLUTE
FINANCE

18/07/21



NATIONAL INTERNATIONAL

- Karnataka govt signs MoU with more than 20 firms, investments worth Rs 28,000 cr expected
- Impact of stamp duty cuts is very real and happy for Indian real estate
- Reliance Retail Ventures buys 41% in Just Dial for Rs 3,497 crore
- WPI inflation eases to 12.07% in June; food, crude prices soften
- US cites pressure from China, warns investors on Hong Kong
- Sweden's Ericsson inks \$8.3 billion 5G deal with Verizon1. China's economy grows more slowly than expected in Q2
- Volkswagen's EV unit plans to double charging infrastructure by end of 2025
- Google says it is "very disappointed" by French €500 million fine
- FedEx Express to invest USD 100 mn in Delhivery
- Crypto exchange Binance stops selling digital versions of stocks like Tesla and Apple as regulators circle

RECENT APPOINTMENTS



**ASHWINI
VAISHNAW**

currently serving as the Minister of Railways, Communications and Electronics & Information Technology of India.

**MAHENDRA NATH
PANDEY**



currently serving as Minister of Heavy Industries and Public Enterprises



**SHRI HARDEEP
SINGH PURI**

current Minister of Petroleum and Natural Gas and Minister of Housing and Urban Affairs

**RAJ KUMAR
SINGH**



current Minister of Power & Minister of New and Renewable Energy



BANKING & FINANCE



- Yes Bank exploring moving credit card issuance to other platforms after RBI restrictions on Mastercard
- Centre releases Rs 75,000 crore to states and UTs as GST compensation shortfall
- RBI restrictions on Mastercard: RBL Bank, Yes Bank, Bajaj Finserv to be most affected
- RBI announces G-SAP 2.0 auction; includes illiquid paper
- Bank credit grows by 6.08%; deposits by 9.76%
- Bharat-Pe eyes \$6 billion in annualised transaction processed value from POS biz
- 42% NBFCs expect over 15 pc growth in AUM in FY2022: Icrs survey

paytm
16,600Cr


Utkarsh Small Finance Bank
1350Cr


glenmark
LIFE SCIENCES
1160Cr


AROHAN
AAVISHKAAR GROUP
850Cr



STOCK MARKET

Index	Price	Change	%Chg
NIFTY 50	15923.40	-0.80	-0.01
SENSEX	53140.06	-18.79	-0.04
NIFTY BANK	35751.80	-155.85	-0.43
NIFTY IT	29400.25	-317.75	-1.07

Company	Current Price	Prev Close Date	Change	Change %	Week's Low/High
Wipro	577.75	525.80 09-07-2021	51.95	9.88%	522.60 - 589.25
Larsen & Toubro	1618.75	1499.60 09-07-2021	119.15	7.95%	1485.50 - 1625.00
Ultratech Cement	7334.55	6899.55 09-07-2021	435.00	6.30%	6835.00 - 7360.00
Tech Mahindra	1103.15	1051.75 09-07-2021	51.40	4.89%	1046.10 - 1119.70
Grasim Industries	1572.30	1500.15 09-07-2021	72.15	4.81%	1461.00 - 1582.15



AGRICULTURE

- Year-on-year kharif sowing trails by 11.56%, reservoir levels lower by 7% than previous year
- More supply than demand keeps vegetables cheap in monsoon for first time in several years; traders, growers struggle to sell
- Horticulture production hits record high at 329.86 million tonnes, says Agriculture Ministry
- Punjab waives Rs 590 crore farm debt loans for labourers and landless farming community
- IFFCO Kisan Sanchar setting up 17 FPOs in Gujarat in tie-up with NABARD, NCDC
- Uttar Pradesh records highest ever procurement of wheat at MSP; Rs 11,141.28 crore paid
- India's agricultural exports will cross \$40 billion in FY22: NABARD Chairman

AUTOMOBILE

- Ola gets 1 lakh bookings for electric scooter
- Toyota joins hands with Karnataka govt to impart industry specific training to ITI students
- KTM cuts price of 250 Adventure by Rs 25,000 till August
- Maruti Suzuki hikes prices of Swift and CNG cars by up to Rs 15,000
- M&M reports total tractor sales of 48,222 units in June, versus 36,544 units a year before
- Tyre exports grow by 10 pc to Rs 14,097cr in FY21
- Ford's India factories near end of road, talks on with Ola for contract manufacturing



Saving ka
kya karte ho



invest karta hu



kahan invest
karte ho



Bluechip stock mein



Wo to dunia ko batane ke liye
asli mein kaha invest karte ho



Dogecoin, Bitcoin or Yes Bank
pe

ENERGY

- Discom losses fell to ₹38K cr in FY20, says power minister
- Power consumption returns to pre-Covid level, rises 17% in 1st fortnight of July
- Thai state-owned PTT's unit acquires 41.6% stake in Avaada Energy
- Power demand in India expected to grow 6% in FY22: Icra
- Adani boosting coal assets despite vow to be carbon neutral
- Tata Power to set up solar rooftop projects in Kerala homes

TRANSPORTATION

- Cabinet okays scheme to provide Rs 1,624 crore over 5 years as subsidy to Indian shipping companies
- JNPT's container cargo traffic rises 52.78 per cent in June
- Zurich airport signs shareholder agreement with NIAL for development of Noida airport
- Kota administration initiates process for allotting 1,250 acres land for Greenfield Airport project
- IRB Pathankot Toll Road wins arbitration award against NHAI

COMPANY NAME

EBITA (CR)

PAT (CR)

HDFC AMC

468

345.45

WIPRO

3948

3243

L&T TECHNOLOGIES

306

216.2

INFOSYS

7201

5195

TATA ELXSI

156

113.38

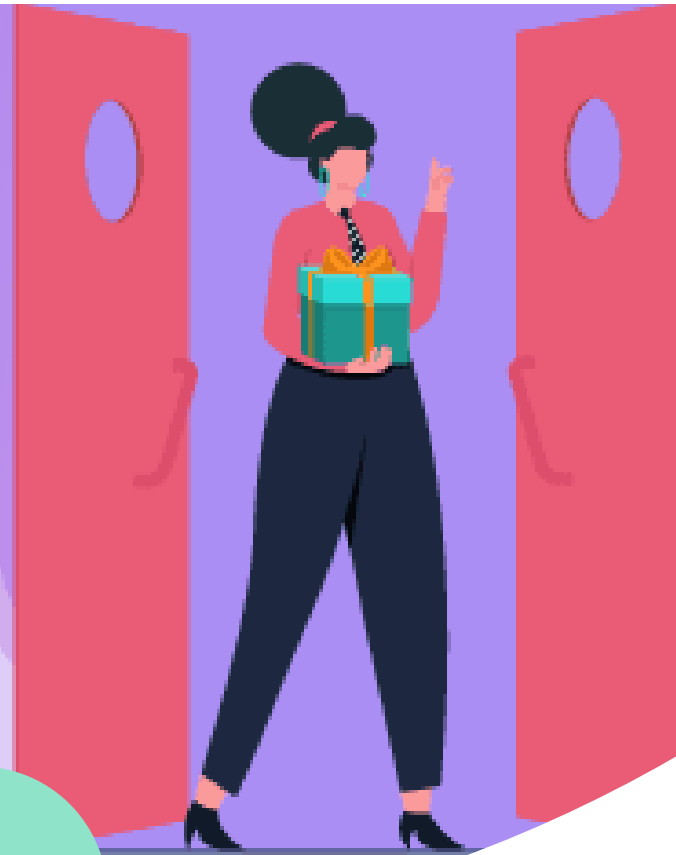
Q1 RESULT

GOLDEN HELLO

1. A payment made to induce an employee to take up employment from a specific employer. in form of a welcome package or a payment from a rival employer to entice the employee to leave the other company.
2. A payment from a government to employer (private company) during an economic recession who takes on new staff, usually superfluously, when job openings in general are scarce

Often sectors like finance and technology deploy a golden hello recruitment technique for executive hires.

WELCOME



How Investors View Golden Hello Bonuses?

How Golden Hello Works?

- Depending on the industry and the company's size, a golden hello may run into the millions of dollars.
- This signing premium is a calculated risk by the hiring company. It hopes that the executive's value and knowledge will exceed the cost of the bonus.
- Specific sectors utilized golden hellos more than others. Technology, finance, and companies providing consulting services.

- Investors use standards such as the environmental, social, and governance criteria (ESG) for a company as they screen potential investments.
- Environmental measures look at how a company performs as a steward of the natural environment.
- Social models examine how a company manages relationships with its employees, customers, and the communities where it operates.
- Governance, including corporate leadership, internal controls, and shareholder rights, consider executive pay as well.
- Any lack of alignment with matters concerning executive compensation may concern longer-term investors, giving them a potential risk to consider when determining whether a company meets its investment criteria.

DO YOU KNOW?



VALUED AT \$2.442 TRILLION, APPLE LEADS THE WORLD'S CORPORATIONS IN MARKET CAPITALIZATION.



ESTABLISHED IN 1602, THE AMSTERDAM STOCK EXCHANGE WAS THE FIRST IN THE WORLD.



WOMEN FIRST WORKED ON THE NEW YORK STOCK EXCHANGE IN 1943 DUE TO A SHORTAGE OF MALE WORKERS DURING WORLD WAR II.



THE BOND MARKET IS MUCH LARGER THAN THE STOCK MARKET.



AS OF 2021, THE OFFICIAL DEBT OF THE UNITED STATES GOVERNMENT WAS APPROXIMATELY \$28 TRILLION.



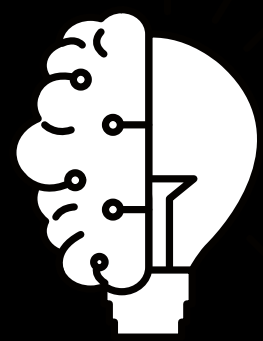
THE RBI LOGO WAS INSPIRED FROM THE EAST INDIA COMPANY DOUBLE MOHUR.



THE FINANCIAL YEAR OF RBI IS FROM 1 JULY TO 30 JUNE

MANMOHAN SINGH IS THE ONLY PRIME MINISTER TO HAVE ALSO SERVED AS THE GOVERNOR OF RBI.





BRAIN GAME

**GIVE ANSWER
HERE**

https://docs.google.com/forms/d/e/1FAIpQLSeEm62FgfZR4L_r-h7zkKBCepbA9nhojjSWtoX2BeXLeYnWMg/viewform?usp=sf_link

★ In the month(2), 5000 Pesta is converted into Lita. In month(5) this is converted back into what value in € (to the nearest)

EXCHANGE RATE (€)

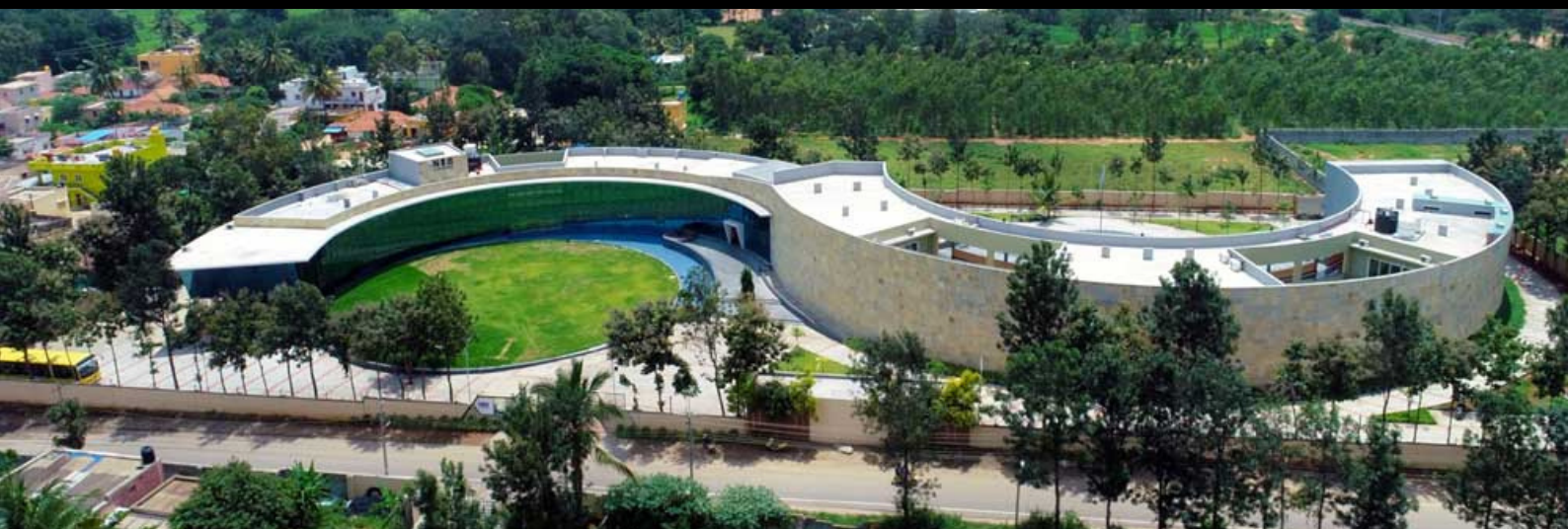
	Month 1	Month 2	Month 3	Month 4	Month 5
Dram	1.61	1.63	1.67	1.61	1.58
Lita	1.53	1.54	1.55	1.51	1.51
Pesta	11.55	11.35	11.24	11.36	11.58
Bahi	1.27	1.28	1.29	1.3	1.28
Reper	1.58	1.61	1.65	1.6	1.56

A € 449


C € 469

B € 459


D € 479



 <https://www.facebook.com/nsbindia/>

 <https://www.youtube.com/c/NSBAcademy>

 <https://in.linkedin.com/school/nsbindia/>

 <https://twitter.com/nsbindia>

 <https://www.instagram.com/nsbeduindia/>

 <https://www.nsb.edu.in/>